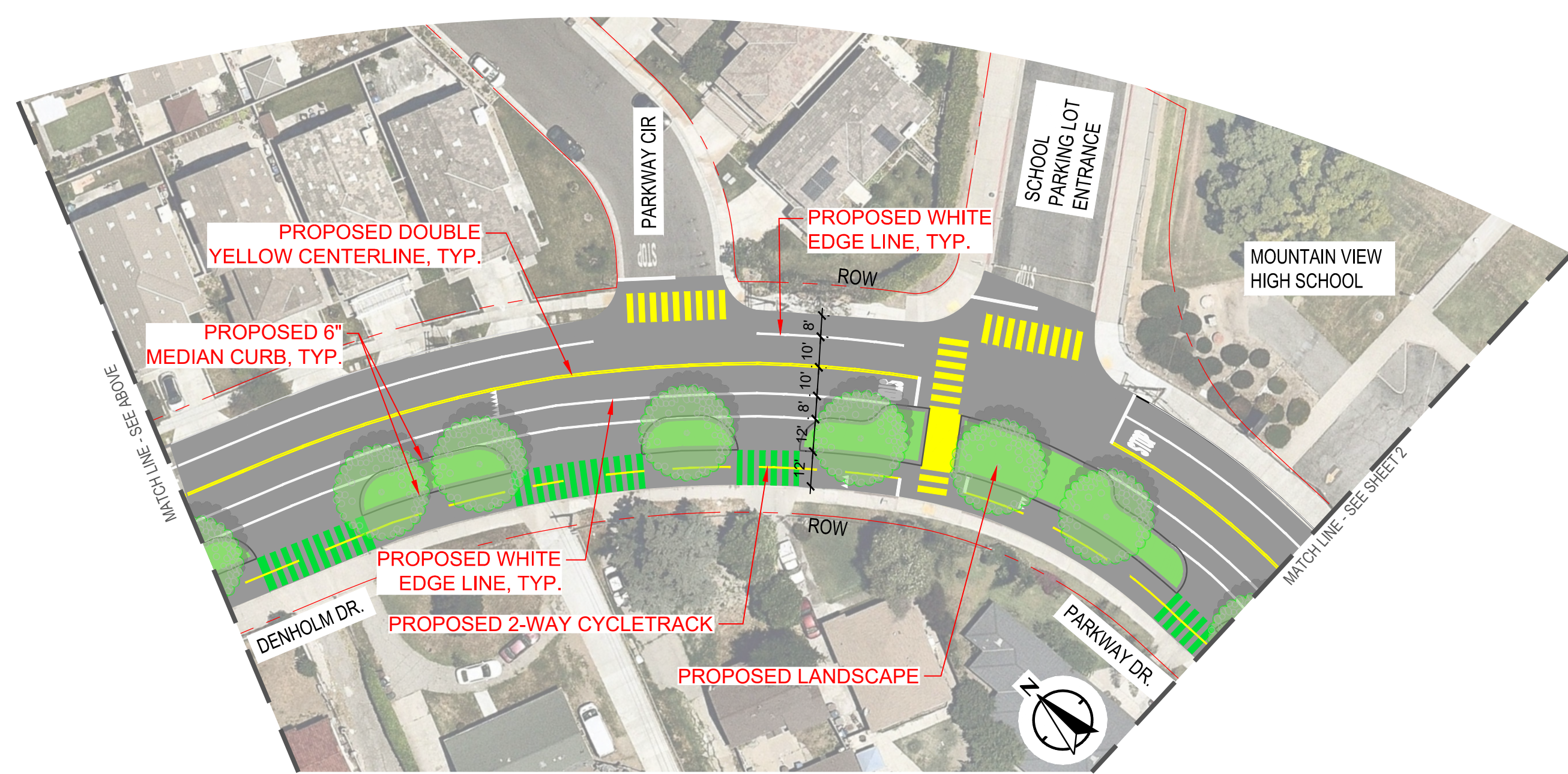


- GENERAL NOTES:**
1. ALL EXISTING SIDEWALKS, DRIVEWAYS, AND CURB RAMPS TO BE MODIFIED TO BE A.D.A. COMPLIANT, TYP.
 2. ALL MEDIAN CORNER RADII TO BE ADJUSTED FOR TURNING MOVEMENTS, TYP.
 3. PROPOSED MEDIAN CURBS TO BE CONSTRUCTED WITH CURB CUTS TO ALLOW FOR 'FLOW THROUGH' STORMWATER CONDITION, TYP.



**CONCEPT PLANS
NOT FOR CONSTRUCTION**



PROJECT NO:	2020-107
DESIGNED BY:	APD
DRAWN BY:	SC
REVIEWED BY:	JP VH
DATE:	9.3.2020
SCALE:	1" = 40'



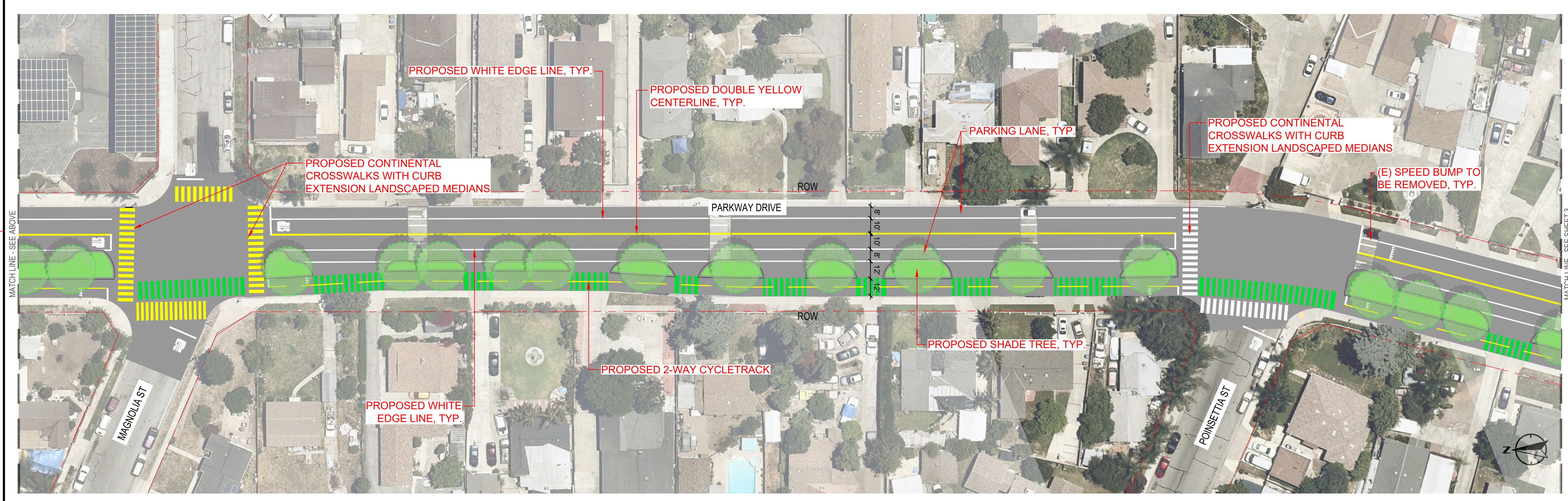
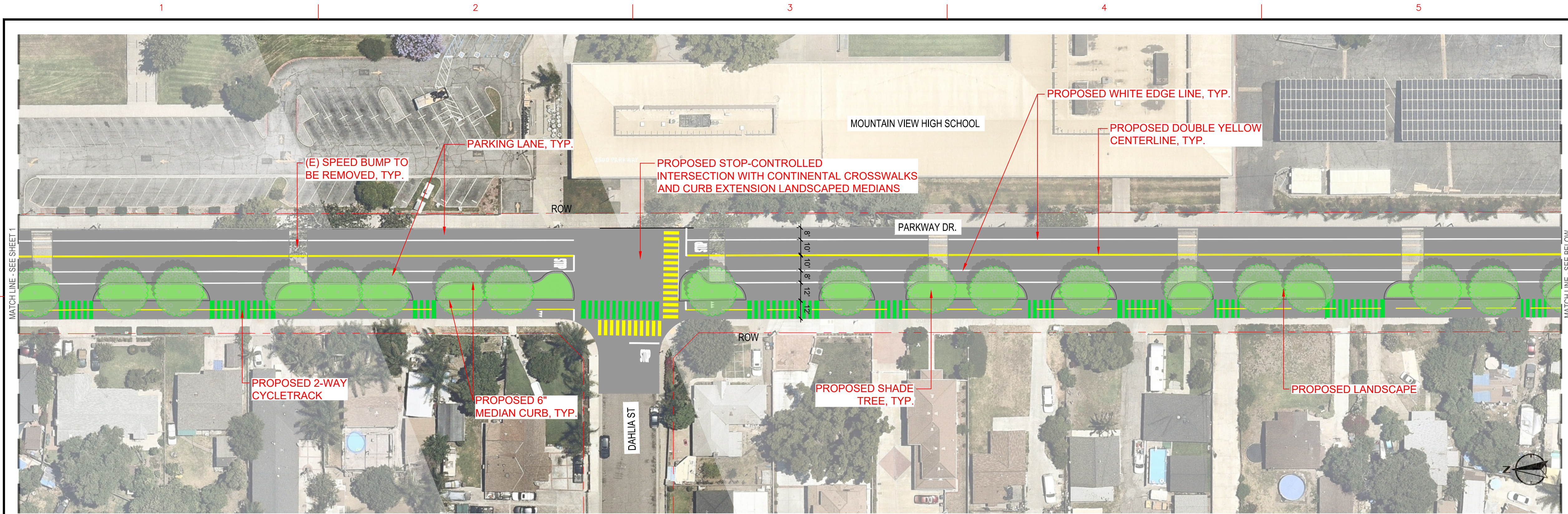
DENHOLM - PARKWAY DRIVE
TRAFFIC CALMING CLASS IV

SHEET TITLE: EL MONTE DENHOLM DRIVE
DRAFT CONCEPT PLAN

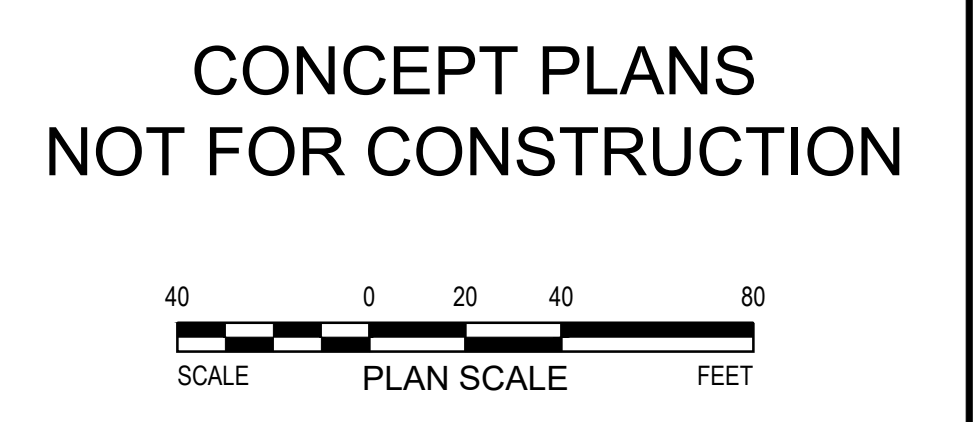
SHEET NO. **1**

SHEET 1 OF 4

####



- GENERAL NOTES:**
1. ALL EXISTING SIDEWALKS, DRIVEWAYS, AND CURB RAMPS MODIFIED TO BE A.D.A. COMPLIANT, TYP.
 2. ALL MEDIAN CORNER RADII TO BE ADJUSTED FOR TURNING MOVEMENTS, TYP.
 3. PROPOSED MEDIAN CURBS TO BE CONSTRUCTED WITH CURB CUTS TO ALLOW FOR 'FLOW THROUGH' STORMWATER CONDITION, TYP.



PROJECT NO:	MARK	DESCRIPTION	ISSUE	DATE	INITIAL
2020-107					
DESIGNED BY: ##					
DRAWN BY: SC					
REVIEWED BY: JP					
DATE: 9.3.2020					
SCALE: 1" = 40'					

617 W 7th Street, #1103
Los Angeles, CA 90017
213-489-7443
www.altaplanning.com

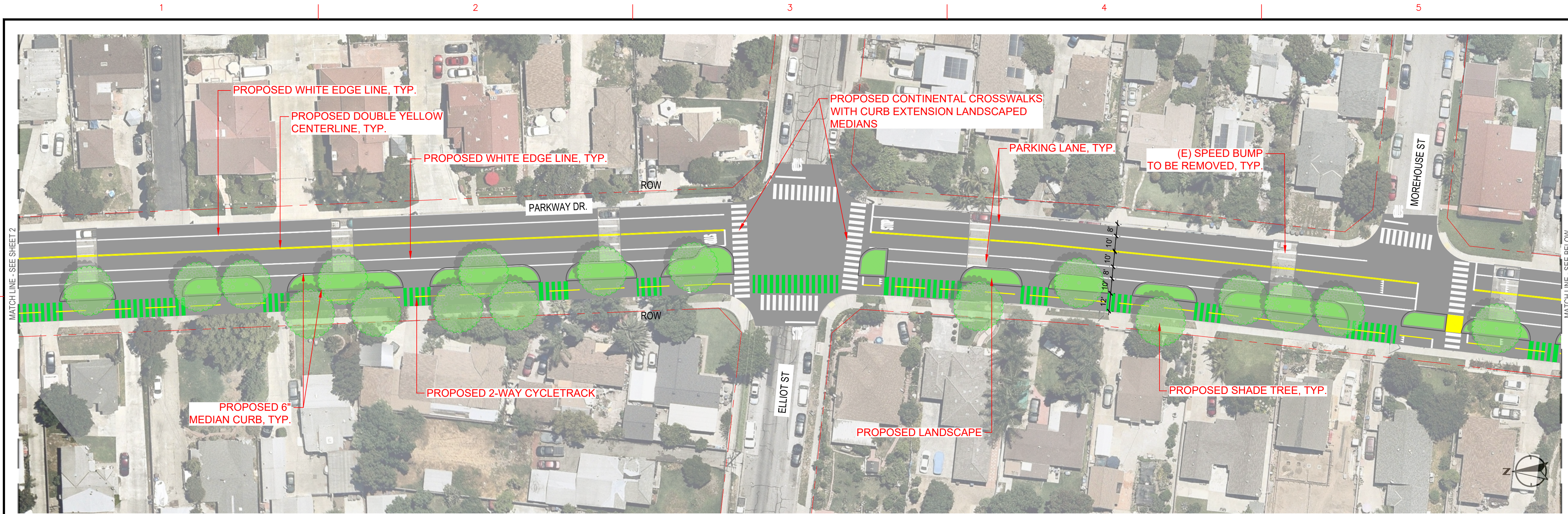
DENHOLM - PARKWAY DRIVE
TRAFFIC CALMING CLASS IV

SHEET TITLE: EL MONTE
PARKWAY DRIVE
DRAFT CONCEPT PLAN

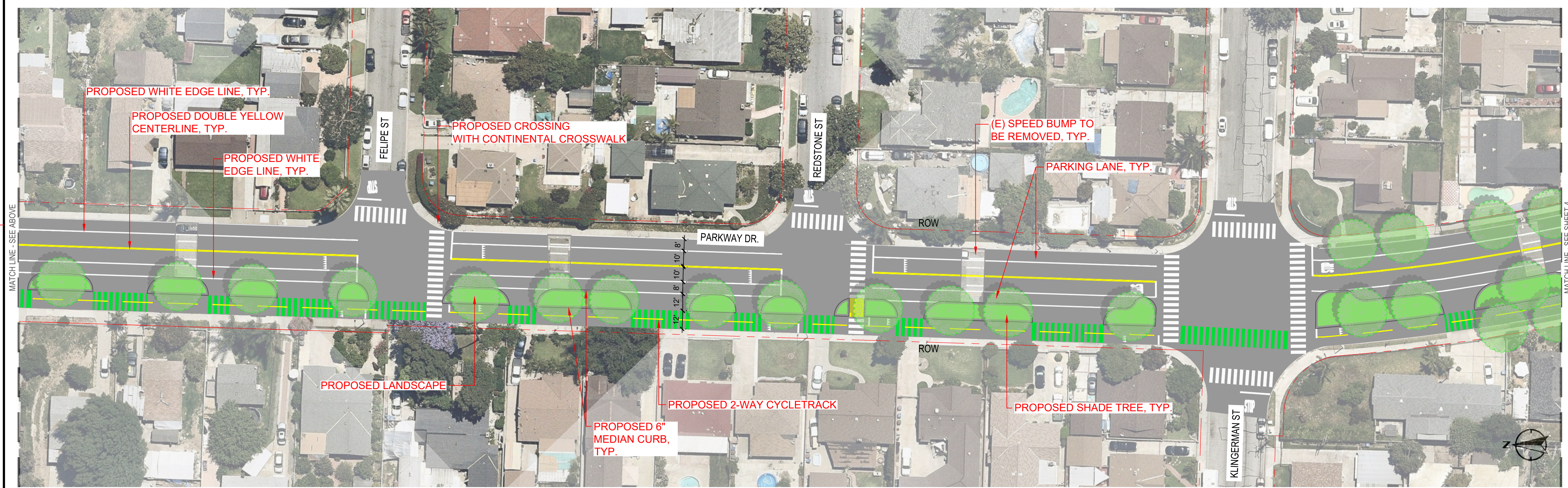
SHEET NO. 2

SHEET 2 OF 4

#



- GENERAL NOTES:**
1. ALL EXISTING SIDEWALKS, DRIVEWAYS, AND CURB RAMPS TO BE MODIFIED TO BE A.D.A. COMPLIANT, TYP.
 2. ALL MEDIAN CORNER RADII TO BE ADJUSTED FOR TURNING MOVEMENTS, TYP.
 3. PROPOSED MEDIAN CURBS TO BE CONSTRUCTED WITH CURB CUTS TO ALLOW FOR 'FLOW THROUGH' STORMWATER CONDITION, TYP.



**CONCEPT PLANS
NOT FOR CONSTRUCTION**



PROJECT NO:	MARK	DESCRIPTION	ISSUE	DATE	INITIAL
2020-107					
DESIGNED BY: ###					
DRAWN BY: SC					
REVIEWED BY: JP					
DATE: 9.3.2020					
SCALE: 1" = 40'					

alta
PLANNING + DESIGN
617 W 7th Street, #1103
Los Angeles, CA 90017
www.altaplanning.com 213-489-7443

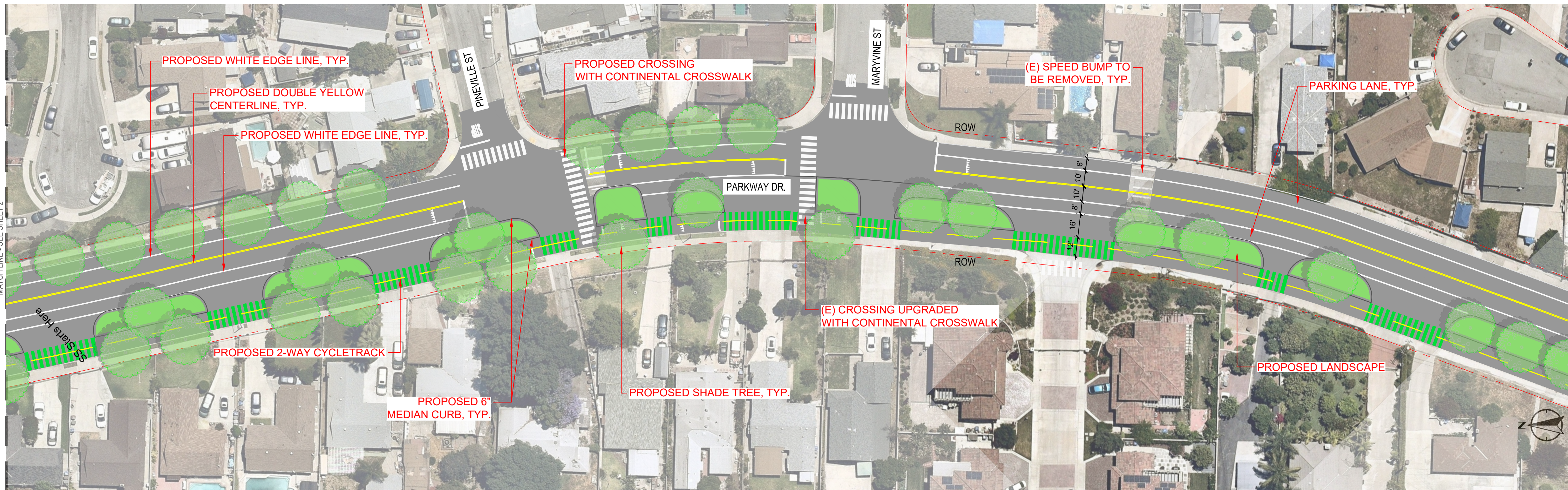
DENHOLM - PARKWAY DRIVE
TRAFFIC CALMING CLASS IV

SHEET TITLE: EL MONTE
PARKWAY DRIVE
DRAFT CONCEPT PLAN

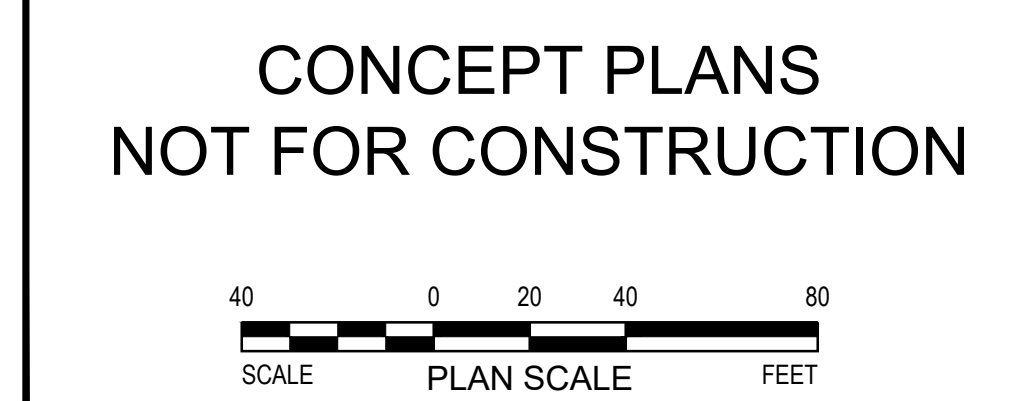
SHEET NO. **3**

SHEET 3 OF 4

####



- GENERAL NOTES:**
1. ALL EXISTING SIDEWALKS, DRIVEWAYS, AND CURB RAMPS TO BE MODIFIED TO BE A.D.A. COMPLIANT, TYP.
 2. ALL MEDIAN CORNER RADII TO BE ADJUSTED FOR TURNING MOVEMENTS, TYP.
 3. PROPOSED MEDIAN CURBS TO BE CONSTRUCTED WITH CURB CUTS TO ALLOW FOR 'FLOW THROUGH' STORMWATER CONDITION, TYP.



PROJECT NO:	2020-107
DESIGNED BY:	###
DRAWN BY:	SC
REVIEWED BY:	JP
DATE:	9.3.2020
SCALE:	1" = 40'

alta
PLANNING + DESIGN
www.altaplanning.com

617 W 7th Street, #1103
Los Angeles, CA 90017
213-489-7443

DENHOLM - PARKWAY DRIVE
TRAFFIC CALMING CLASS IV

SHEET TITLE
EL MONTE
PARKWAY DRIVE
**DRAFT CONCEPT
PLAN**

SHEET NO.
4

SHEET 4 OF 4

#